

# SAMSUNG PRINTING INNOVATION

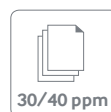
Samsung Mono Multifunction Printer  
*MultiXpress* SCX-8230/8240 SERIES



***MultiXpress*** SCX-8230/8240 SERIES

Adapt to Today's Fast Paced Environment

SCX-8230NA / SCX-8240NA



**SAMSUNG**

# Samsung Mono Multifunction Printer

## **MultiXpress** SCX-8230/8240 SERIES

### Adapt to today's fast paced environment

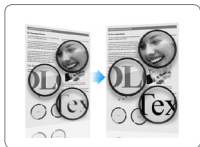
In today's fast paced environment, you expect your MFP to achieve maximum uptime. The new Samsung MultiXpress provides high-output workgroups optimal speed for printing, copying, scanning and faxing without sacrificing quality. Samsung Rendering Engine for Clean Page (ReCP) technology produces professional-grade printouts, and the polymerised toner provides a vivid and glossy finish with smaller and more uniform particles.

#### Models

SCX-8230NA / SCX-8240NA



## MultiXpress SCX-8230/8240 SERIES FEATURES



### Enjoy quality printouts

Samsung's unique ReCP (Rendering Engine for Clean Page) Technology improves the overall quality and vibrancy of your black & white printing, ensuring every printout looks perfect. It automatically sharpens the focus of both graphics and text, while solid objects are overlapped to eliminate white gaps.



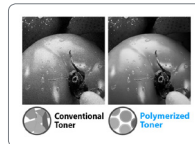
### Improve performance with twice the power

The MultiXpress MFPs enhance office productivity with faster printing and scanning capabilities, powered by a fully integrated Samsung 1 GHz dual-core processor. Large print and copy jobs are easier to manage, and scanning throughput is increased. The dual-core processor performs printing tasks faster than a conventional processor, enabling employees to focus on core work activities.



### Wide media acceptance, including banners

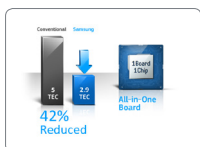
The MultiXpress MFPs can accept a wide array of media types. The A3-capable MFPs accept the widest copy paper weight in the class. A multipurpose tray supports envelopes of various widths, heavy stock paper and other special media. Additionally, the MFPs can support banners up to 1,200 mm x 320 mm (47.2" x 12.6").



### Prevent document fading with polymerized toner

Samsung polymerized toner produces smaller and more uniform particles than conventional toners. Printouts have crisper lines and intense colors, and pages curl less often. Additionally, the high wax content improves the image gloss and durability, which helps prevent the document from fading.

# MultiXpress SCX-8230/8240 SERIES FEATURES CONTINUED



## Low power consumption

With its ingenious All-in-One board, overall energy consumption is kept low by minimising power requirements. In fact, compared to a conventional board it reduces TEC (Typical Electricity Consumption) by up to 42%. Meanwhile, Samsung Instant Fusing System (IFS) technology helps you print and copy faster, use less energy, and reduce energy costs.



## Simplified savings with the touch of a button

Businesses can lower operating expenses with greater ease using Eco Mode, an energy-saving feature that helps companies reduce paper and power costs. By simply pressing the Eco button on the MFP, users can print more onto every page, with options for 2-up, 4-up and duplex printing.

Additionally, users can select the option to automatically skip blank pages, which helps save on toner, further reducing supply expenses. Based on an internal Samsung test, Samsung MFPs with Eco Mode outperformed an MFP without Eco Mode: Easy Eco Driver provides users a preview of a document before printing, which helps reduce wasted printouts. While previewing the document, users can modify its format by removing text and images. The user can also adjust the layout (for example, from 1-up to 2-up printing) without changing the original document layout.



## Mobile printing

Mobile workers can print, scan and transfer files wirelessly from a Samsung mobile device. Workers can realize increased productivity because they can print without having to install printer drivers to use robust print features.

**Note: Wireless Access Point (AP) is required.**



## Reduced downtime for maintenance

Decreased maintenance and installation times help businesses meet deadlines within budget. Toner replacement for the MultiXpress MFPs printers is designed for ease of use. In addition, users can correct paper jams without the need for a maintenance call. Fewer steps are required to replace high-frequency service items (HFSIs), such as fusers, rollers and image transfer units (ITUs). Fewer maintenance steps means the device is more readily available when users need it.



## LCD control panel that is largest in its printer class

The color LCD control panel on the MultiXpress MFPs is 8.9 in. and considered One of the largest MFPs in its MFP class. The control panel tilts for convenient viewing of the current job status, following prompts during an operation and setting up menus. Also, LED indicators, such as low paper alerts or a ready-for-use indicator, help users more quickly determine the device status.



# MultiXpress SCX-8230/8240 SERIES SPECIFICATION



	SCX-8230NA	SCX-8240NA
Print Speed (Mono)	Up to 30 ppm in A4/Letter	Up to 40 ppm in A4/Letter
Warm-up (From Sleep)	16 second	16 second
Print Resolution	Default 600 x 600 x 2 bit Up to 600 x 600 x 4 bit	Default 600 x 600 x 2 bit Up to 600 x 600 x 4 bit
Processor	1 GHz (Dual Core)	1 GHz (Dual Core)
Memory	1.0 GB	1.0 GB
HDD	320 GB HDD Standard (Document Box Space): 154 GB	320 GB HDD Standard (Document Box Space): 154 GB
Operational Panel	8.9" Color Touch-Panel LCD, 1024 x 600 (WSVGA)	8.9" Color Touch-Panel LCD, 1024 x 600 (WSVGA)
Interface	High Speed USB 2.0 Device/Host / Ethernet 10/100/1000 BASE TX	High Speed USB 2.0 Device/Host / E thernet 10/100/1000 BASE TX
FCOT (Mono)	7 seconds	5.5 seconds
Scan Speed (Mono)	45 ipm (300 dpi / A4/Letter)	45 ipm (300 dpi / A4/Letter)
Dimension (WxDxH)	677.5 x 763 x 853.6 mm / 26.7" x 30.0" x 33.6" (including DADF)	677.5 x 763 x 853.6 mm / 26.7" x 30.0" x 33.6" (including DADF)
Weight	92.5 Kg / 204 lbs (including DADF / Waste Toner Box)	92.5 Kg / 204 lbs (including DADF / Waste Toner Box)
Max. Monthly Duty	120,000 pages	150,000 pages

ADAPT TO TODAY'S  
FAST PACED  
ENVIROMENT



# MultiXpress SCX-8230/8240 SERIES

## COMPATIBLE SUPPLIES & OPTIONS

The **MultiXpress** SCX-8230 Series is supported by high quality supplies and options.

### SUPPLIES



**MLT-K606S**  
Toner Cartridge  
35K



**MLT-K607S**  
Toner Cartridge  
20K pages

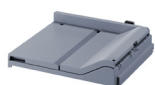


**MLT-R607K**  
Imaging Unit  
100K pages



**MLT-W606**  
Waste Toner Container  
300K pages

### OPTIONS



**CLX-BRG200**  
Bridge



**SCX-STP000**  
Staples Cartridge  
5,000 x 3 EA



**CLX-DHK12C**  
Cassette Heater  
210V



**CLX-DSK10T**  
Stand



**CLX-FAX160**  
Single FAX



**CLX-FAX260**  
Dual FAX



**CLX-FIN40L**  
Finisher  
3K Booklet



**CLX-FIN40S**  
Finisher  
1K Standard



**CLX-HCF102**  
Internal-HCF  
2,000sh/80g



**CLX-HPU000**  
PUNCH HOLE  
2/3 HOLE



**CLX-HPU001**  
PUNCH HOLE  
2/4 HOLE



**CLX-PFP000**  
Dual Cassette Feeder  
1,040sh / 80g



**CLX-WKT000**  
Working Table



**CLX-KIT10F**  
Foreign device interface



**SCX-JST000**  
Job Separator



Samsung Electronics EHQ,  
Regus Building, 3000 Hillswood Drive,  
Chertsey, Surrey, KT16 0RS, United Kingdom

Product/model availability may differ per country. Please consult your local Samsung office to confirm product/model availability. All brand and/or product names are trademarks of their respective owners. Specifications and external appearance are subject to change without notice. The colour of the actual product may vary from the colour shown in the brochure. The images in this brochure are not real photographs and slight differences in detail might appear. Copyright C 2014 Samsung Electronics Ltd. All rights reserved. This brochure, its contents and/or layout may not be modified and/or adapted, copied in part or in whole and/or incorporated into other works without the prior written permission of Samsung Electronics Ltd

[www.samsung.com](http://www.samsung.com)